

WALDEN

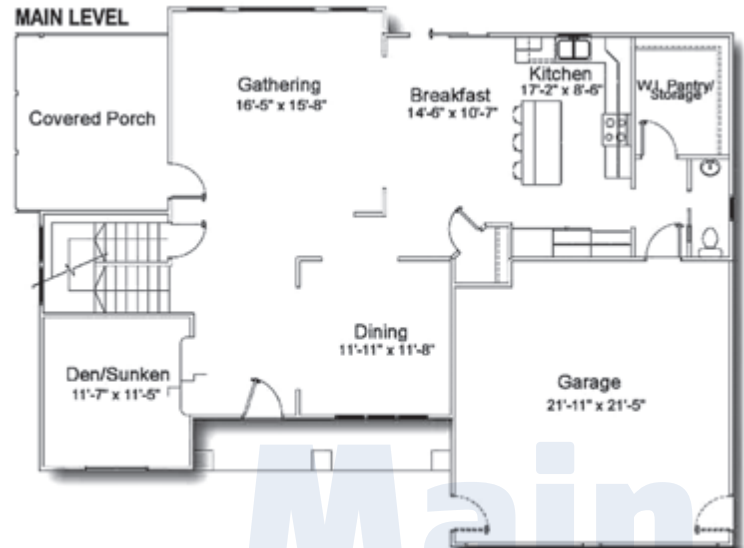
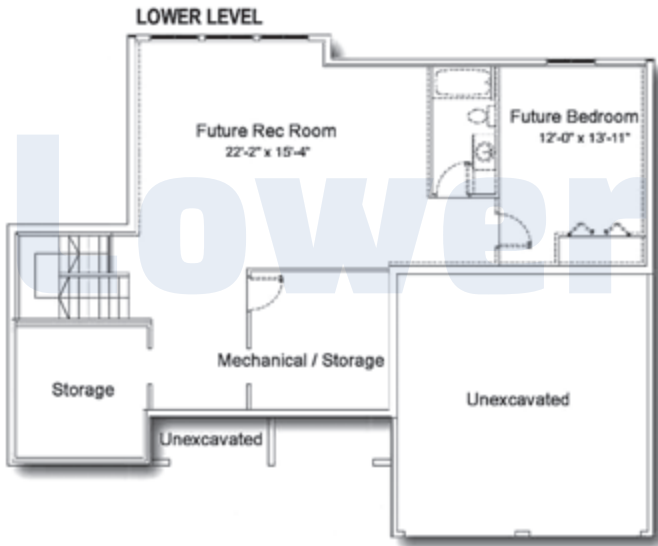
A Fine Example of style and flexibility, the two level Walden design is perfect for families seeking plenty of options and **refined space** for living and entertaining. From the covered front porch, step inside to a home that is, at once, grand yet inviting. To your left, a uniquely cozy **sunken den**, to your right a formal dining room, poised to assist with holiday meals and other entertaining. Straight ahead, the sun splashed gathering room is bathed in light from its large windows. The kitchen boasts a spacious walk-in pantry, with room to personalize—a wine cellar, perhaps; or extra kitchen gadget storage. A covered deck completes the main floor. **Upstairs** are four bedrooms, including a large owner's suite with dual sinks and his and her walk-in closets. Another unique feature, an upstairs den, provides an ideal location for a home office or video game arcade. A convenient **2nd floor laundry** finishes the list of the Walden's extensive features and extras for the space- and design-loving families who call it home.

Bedrooms	4 - 5
Bathrooms	2.5 - 3.5
<hr/>	
Total Conditioned Space	2879
Main Floor	1307
Second Floor	1572
Lower Level	847
Garage	435
Deck	100
<hr/>	
Total	4261

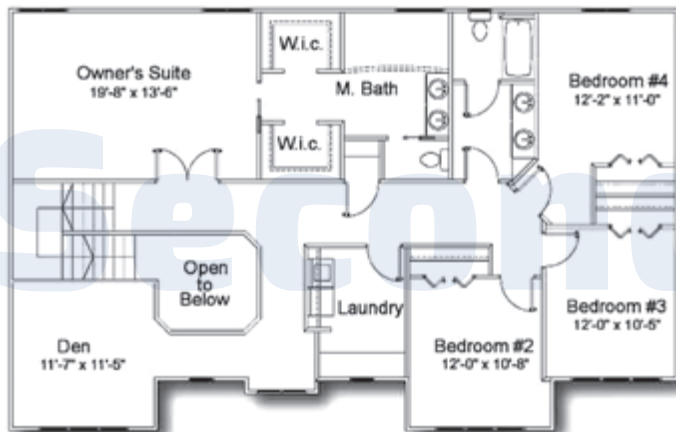


185 44th street Suite D • Grandville, MI 49418
616-667-3333 • bosgraaf.com

WALDEN



SECOND LEVEL



185 44th street Suite D • Grandville, MI 49418
616-667-3333 • bosgraaf.com

FLIP IT. COLOR IT. IT'S YOUR HIGH PERFORMANCE HOME!

All of Bosgraaf's home plans can be "flipped" with the garage on either side. Colors, inside and out, are up to you, as well. You can even decide to invest in optional features such as a third garage stall, or other enhancements. Even though we offer "pre-designed" home choices, *we believe the only place for cookie cutters is in your kitchen drawer!*

