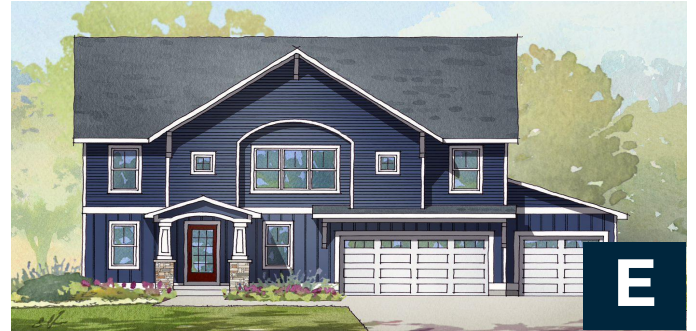




THE ASPEN



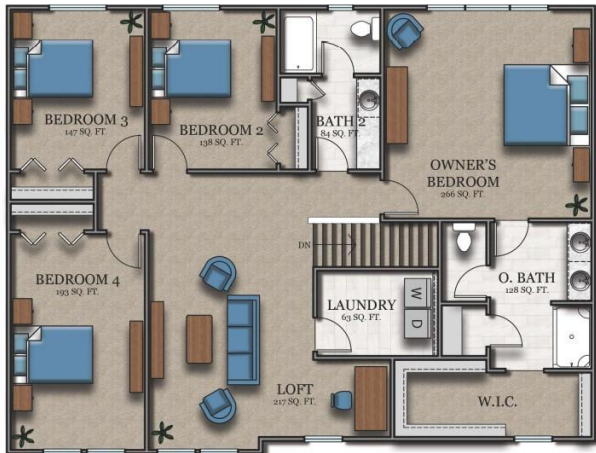
If it's space you're looking for, the Aspen is the ideal plan to maximize your "space-per-dollar." Describing it truly exhausts the adjectives for "large." There is the massive great room, the spacious living room, a huge family entrance and a sizeable laundry. Upstairs, you'll find 4 roomy bedrooms including a substantial owner's suite with a walk-in closet and sitting area. The home expands on the second floor with a common area capable of becoming a game room, home theatre, craft room... the possibilities are endless! If you seek to invest your money in pure and useful living space . . .

The Aspen is for you!

FOR MORE INFORMATION, VISIT US:

148 South River Ave Suite 100 Holland, MI 49423 | 616-667-3333 | bosgraaf.com

THE ASPEN



Upper Level

Aspen

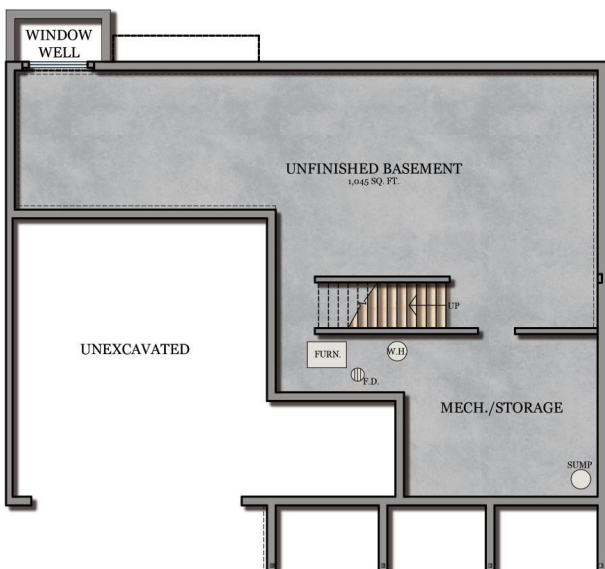
4-6 Bedrooms
2.5-3.5 Bathrooms
1,584 Sq Ft // Upper Level
1,067 Sq Ft // Main Floor
654 Sq Ft // Fut. Fin. LL
518 Sq Ft // Garage



Main Floor

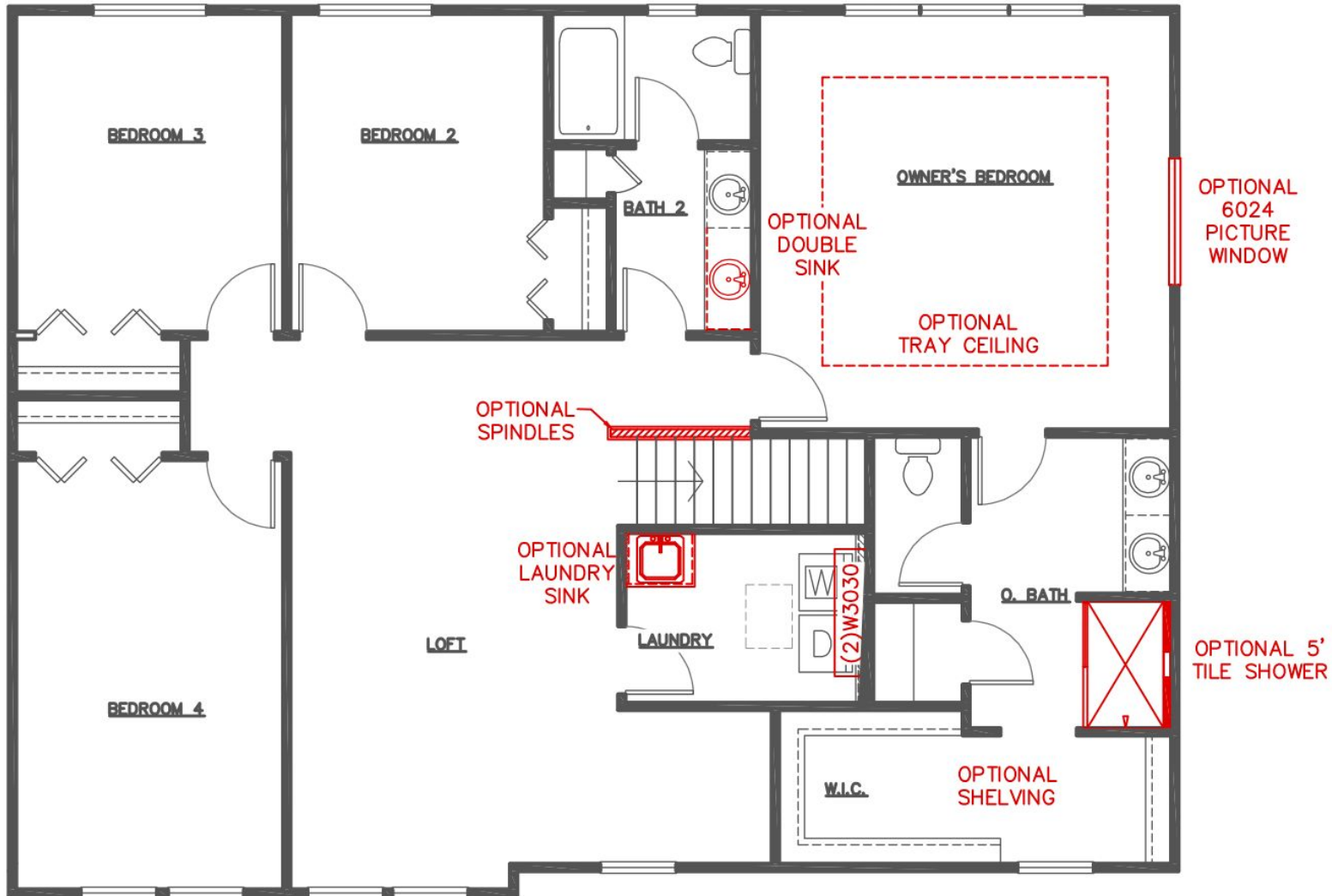
Flip It, Color It, It's YOUR High Performance Home!

All of Bosgraaf's home plans can be "flipped" with the garage on either side. Colors, inside and out, are up to you as well. You can even decide to invest in optional features such as a third garage stall, or other enhancements. Even though we offer "pre-designed" home choices, we believe the only place for cookie cutters is in your kitchen drawer!



Lower Level

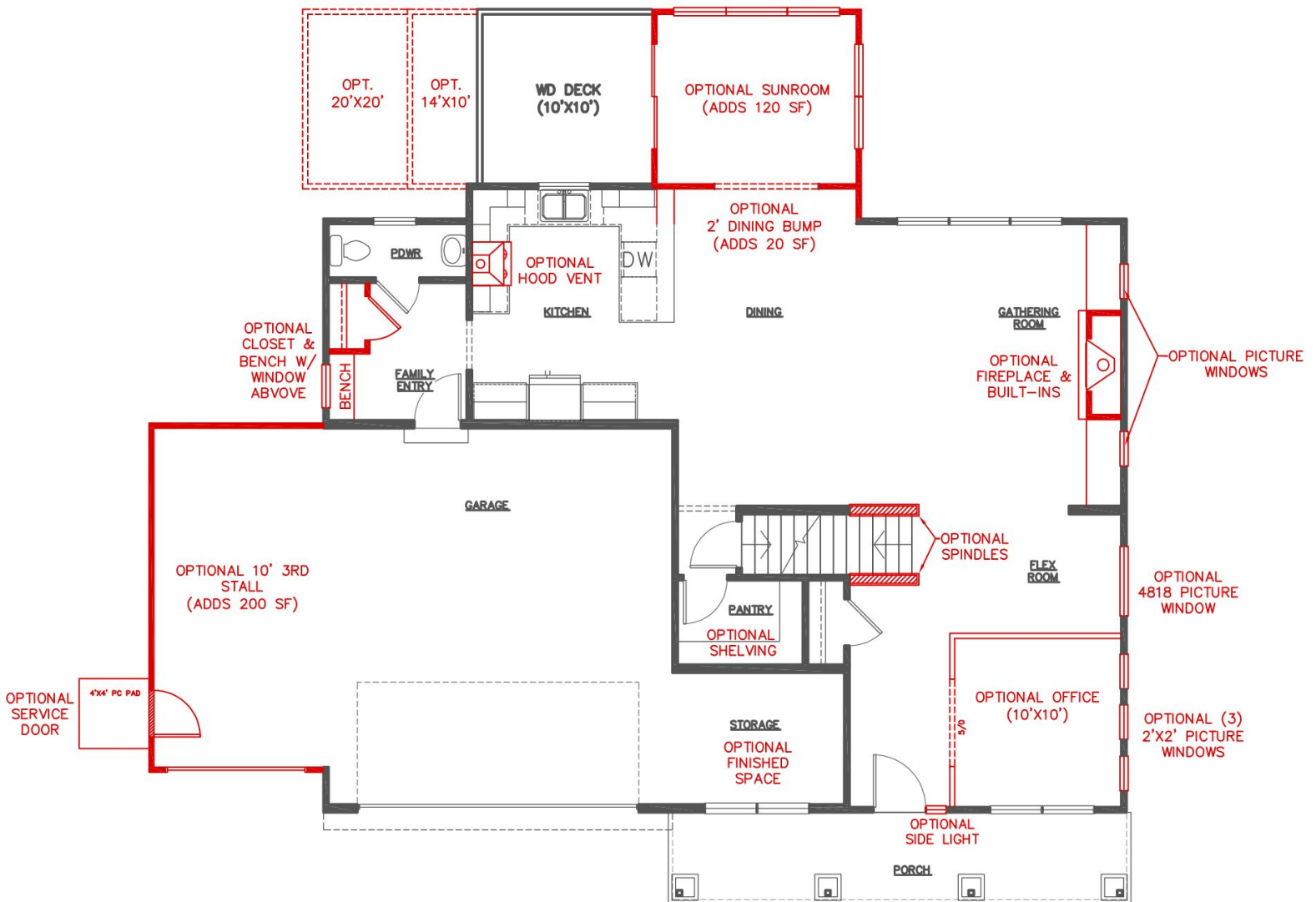
THE ASPEN



THE ASPEN POPULAR DESIGN OPTIONS Upper Floor



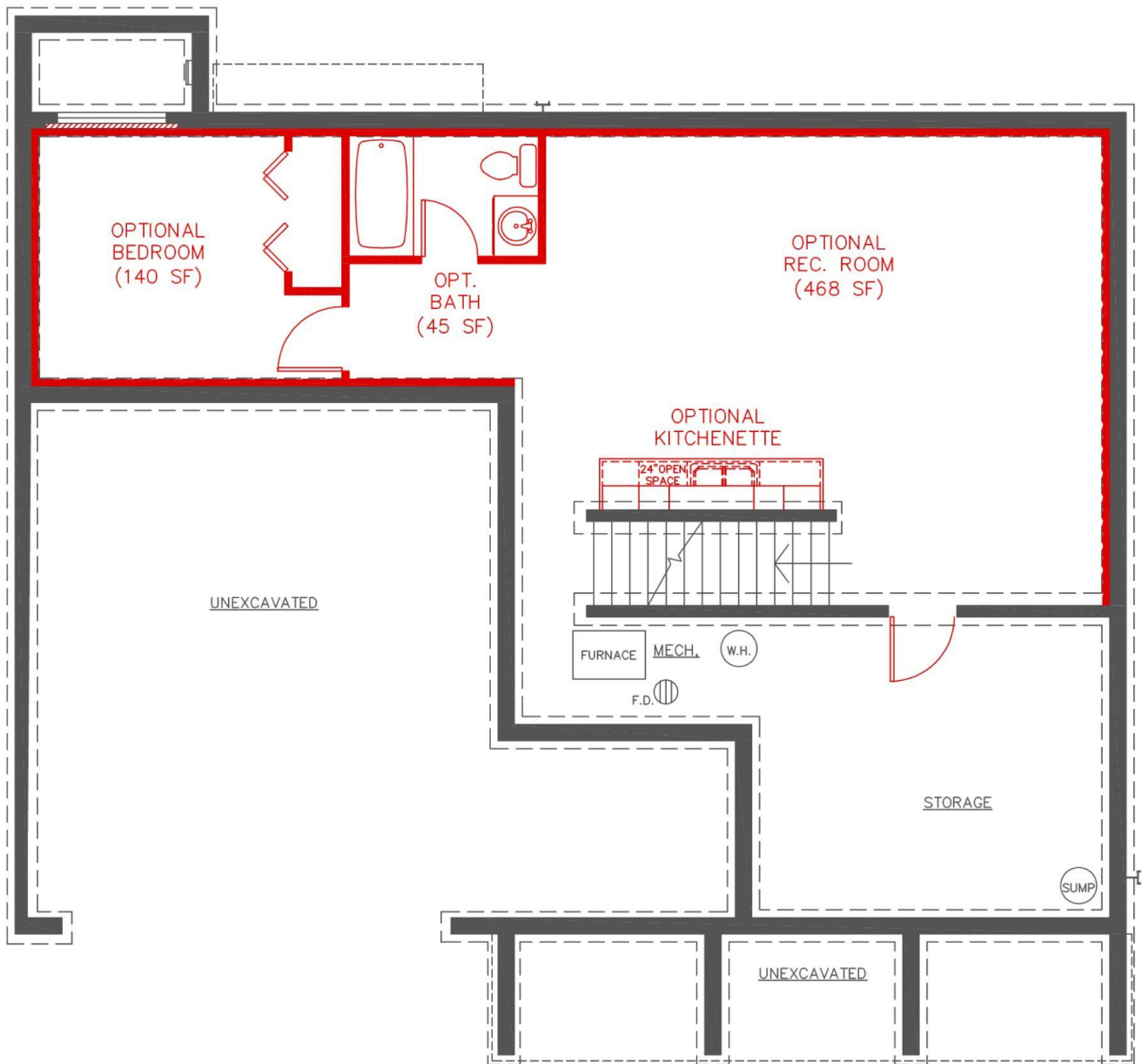
THE ASPEN



THE ASPEN POPULAR DESIGN OPTIONS

Main Floor

THE ASPEN



THE ASPEN POPULAR DESIGN OPTIONS Lower Level