



## THE WHITNEY



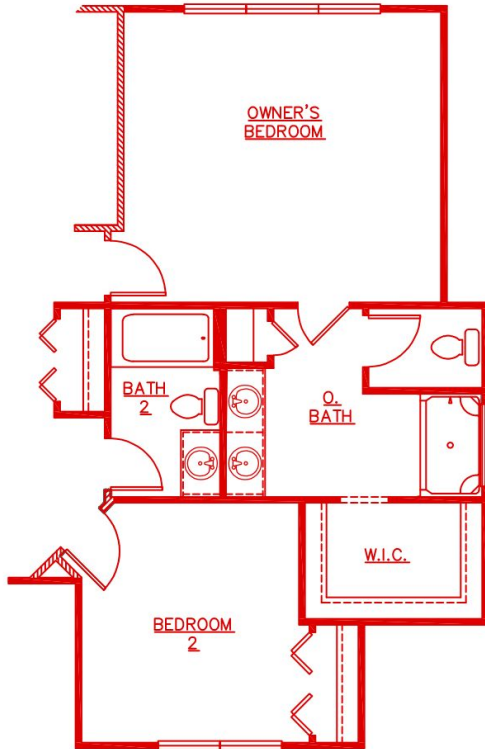
Welcome to the sweeping ranch that will simply sweep you off your feet. Let's start with the first floor owner's suite, which includes a sumptuous master bath with his and her vanities, and a walk-in closet. A second and third bedroom or den, and a full bath are also found on this main floor. The delightful kitchen with a convenient canter island and large, open dining area flows into the gathering room. Loaded with natural-light from the abundant windows, this room is made for relaxation or casual entertaining. The lower level offers a wide open space for future bedrooms (2). A full bath, storage areas, and a huge rec room with plenty space for fun.

**The Whitney is for you!**

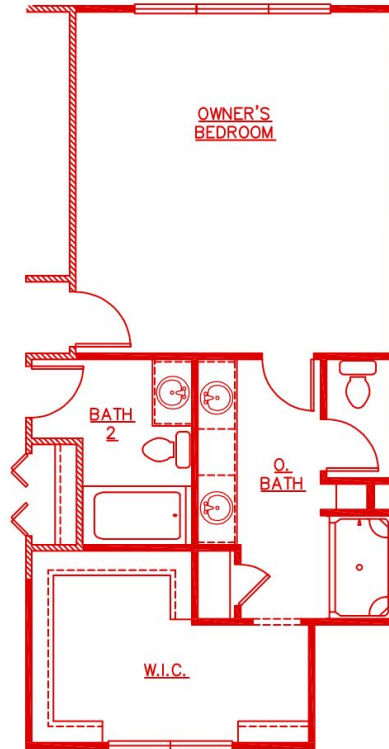
FOR MORE INFORMATION, VISIT US:

148 South River Ave Suite 100 Holland, MI 49423 | 616-667-3333 | [bosgraaf.com](http://bosgraaf.com)

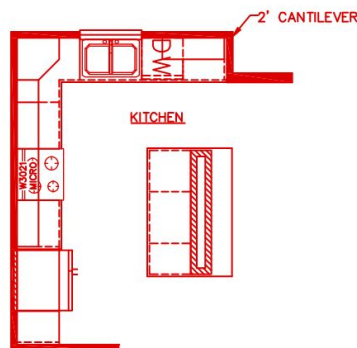
# THE WHITNEY



OPTIONAL LX 2 BEDROOM



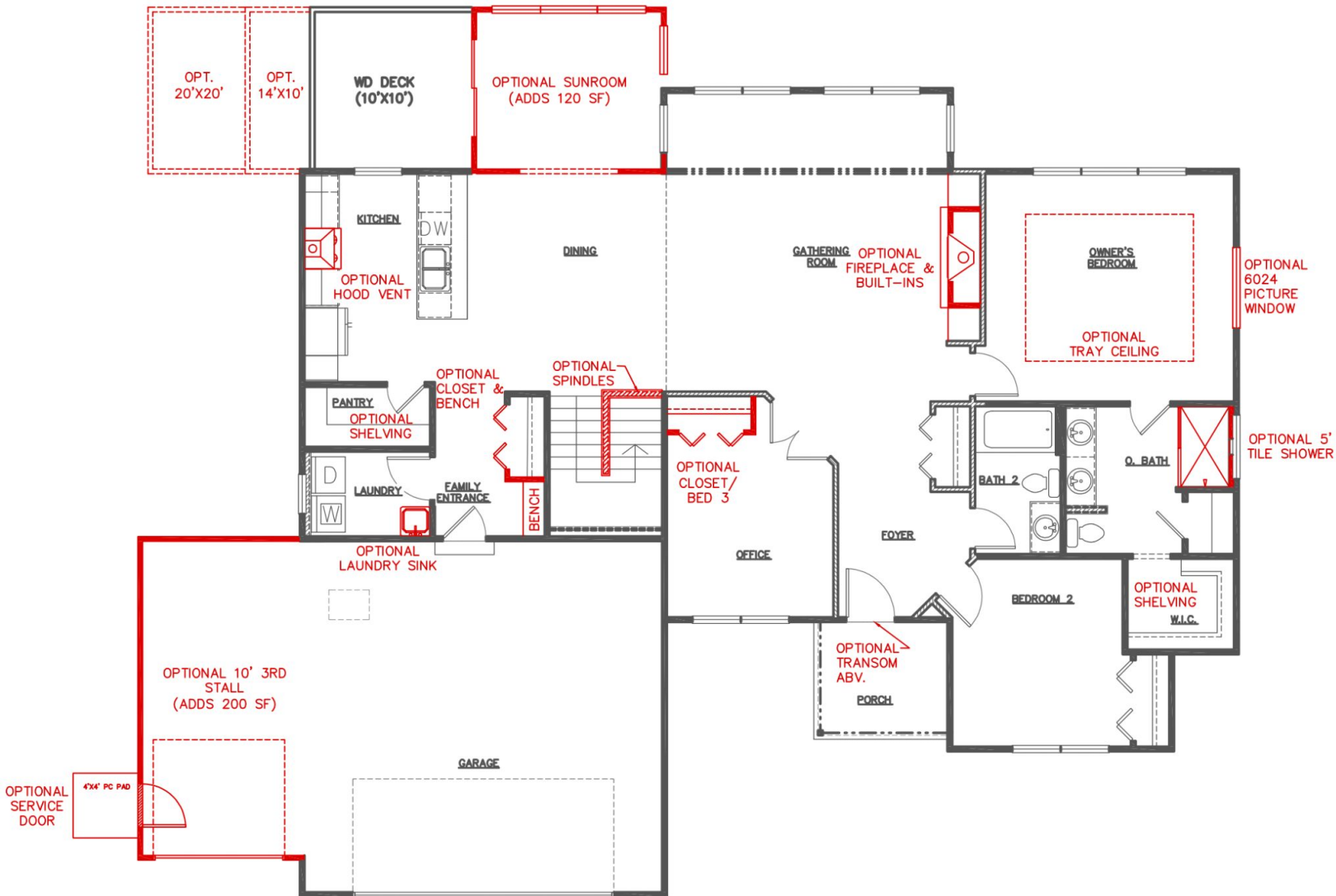
OPTIONAL LX 1 BEDROOM



OPTIONAL LX KITCHEN

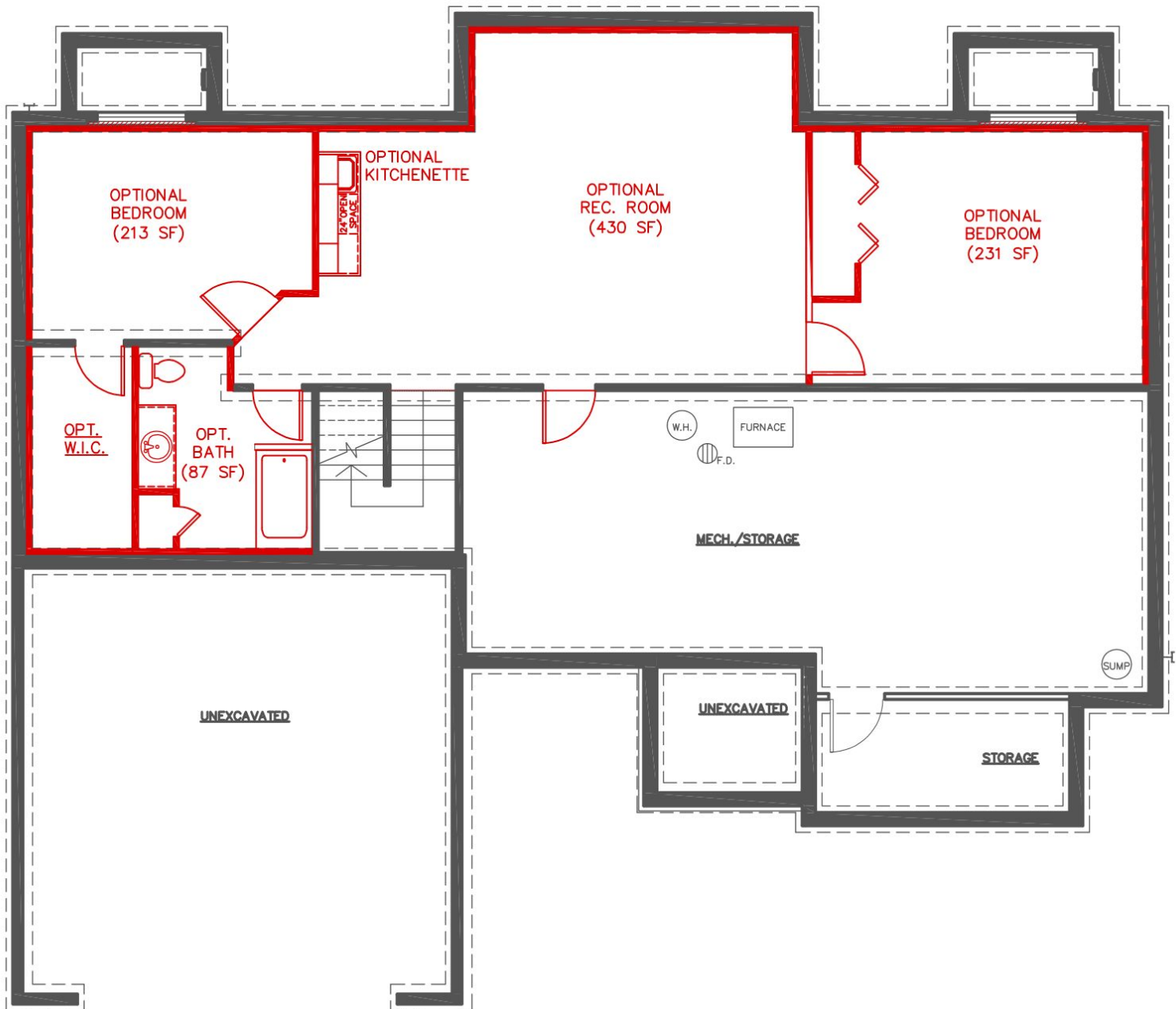
## THE WHITNEY POPULAR DESIGN OPTIONS Upper Level

# THE WHITNEY



## THE WHITNEY POPULAR DESIGN OPTIONS Main Floor

# THE WHITNEY



## THE WHITNEY POPULAR DESIGN OPTIONS Lower Level