

## THE BRECKENRIDGE



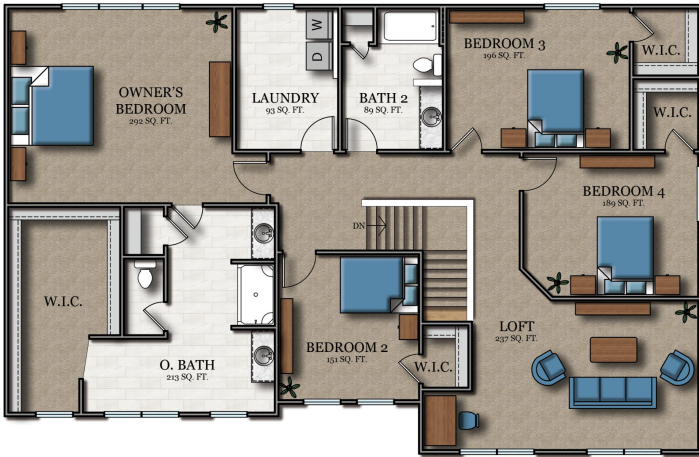
Value engineered to stretch both living space and your home buying dollar, the Breckenridge is another spacious design from Bosgraaf. A welcoming foyer greets you as you enter. To the right is a flexible, cozy den, library, music room, or study. Then, a large formal dining room for entertaining. Further into the home, it explodes into a fantastic great room and huge kitchen for gathering the family. A large family entrance and laundry area round out the fabulous, main level of the Breckenridge. Upstairs are 4 bedrooms and a large owner's suite with a huge walk-in closet and dressing area. A second floor family room opens up all kinds of possibilities: game room, home theatre, the list is as long as your imagination.

**The Breckenridge is for you!**

FOR MORE INFORMATION, VISIT US:

148 South River Ave Suite 100 Holland, MI 49423 | 616-667-3333 | [bosgraaf.com](http://bosgraaf.com)

# THE BRECKENRIDGE



Upper Level

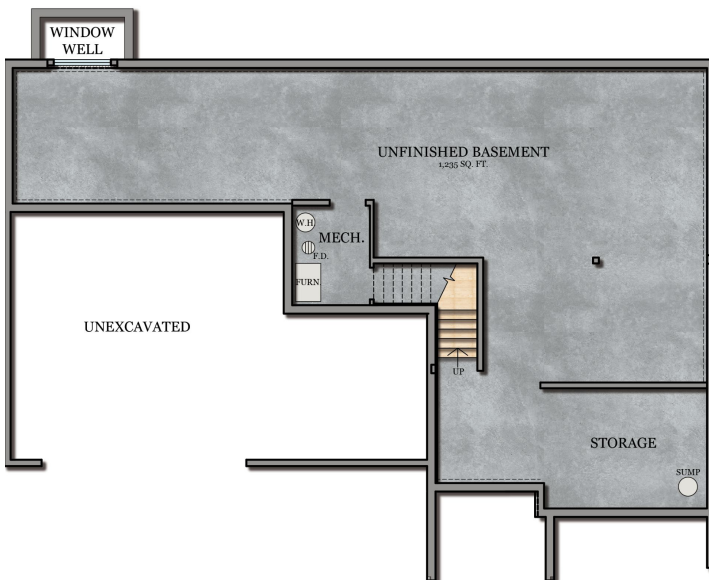
## Breckenridge

4-6 Bedrooms  
 2.5-3.5 Bathrooms  
 1,888 Sq Ft // Upper Level  
 1,280 Sq Ft // Main Floor  
 955 Sq Ft // Fut. Fin. LL  
 585 Sq Ft // Garage



Main Floor

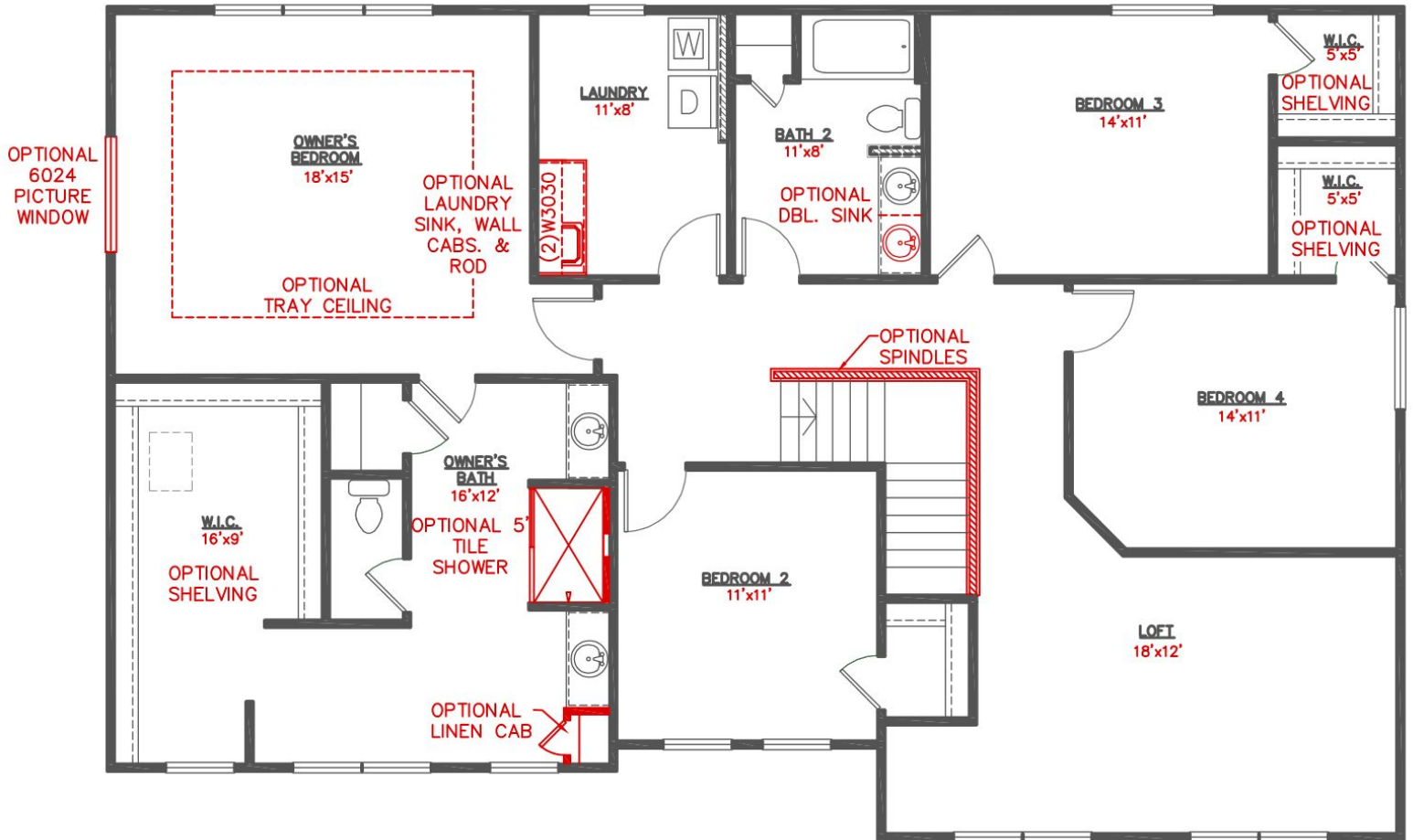
**Flip It, Color It,  
 It's YOUR  
 High Performance  
 Home!**



Lower Level

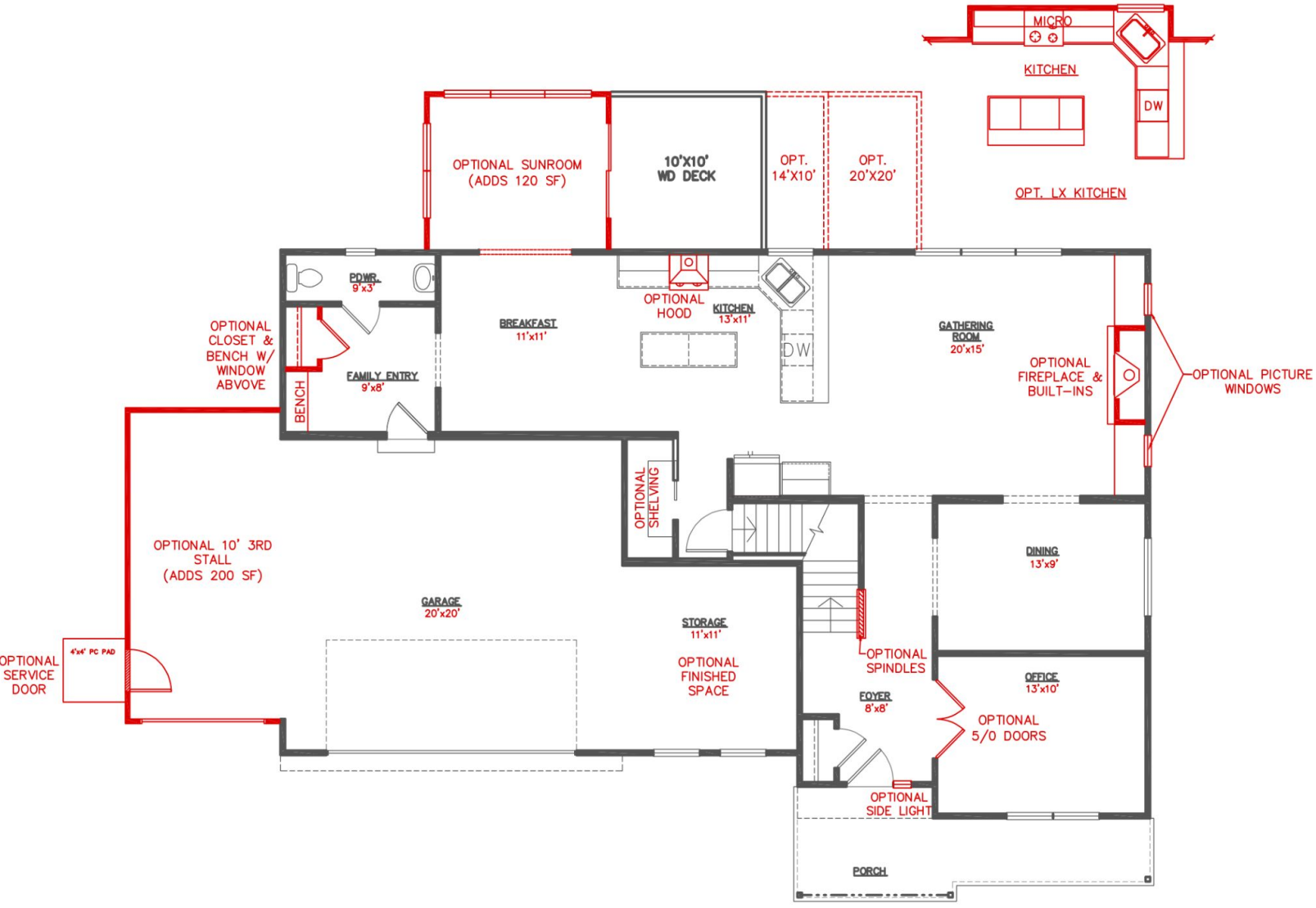
All of Bosgraaf's home plans can be "flipped" with the garage on either side. Colors, inside and out, are up to you as well. You can even decide to invest in optional features such as a third garage stall, or other enhancements. Even though we offer "pre-designed" home choices, we believe the only place for cookie cutters is in your kitchen drawer!

# THE BRECKENRIDGE



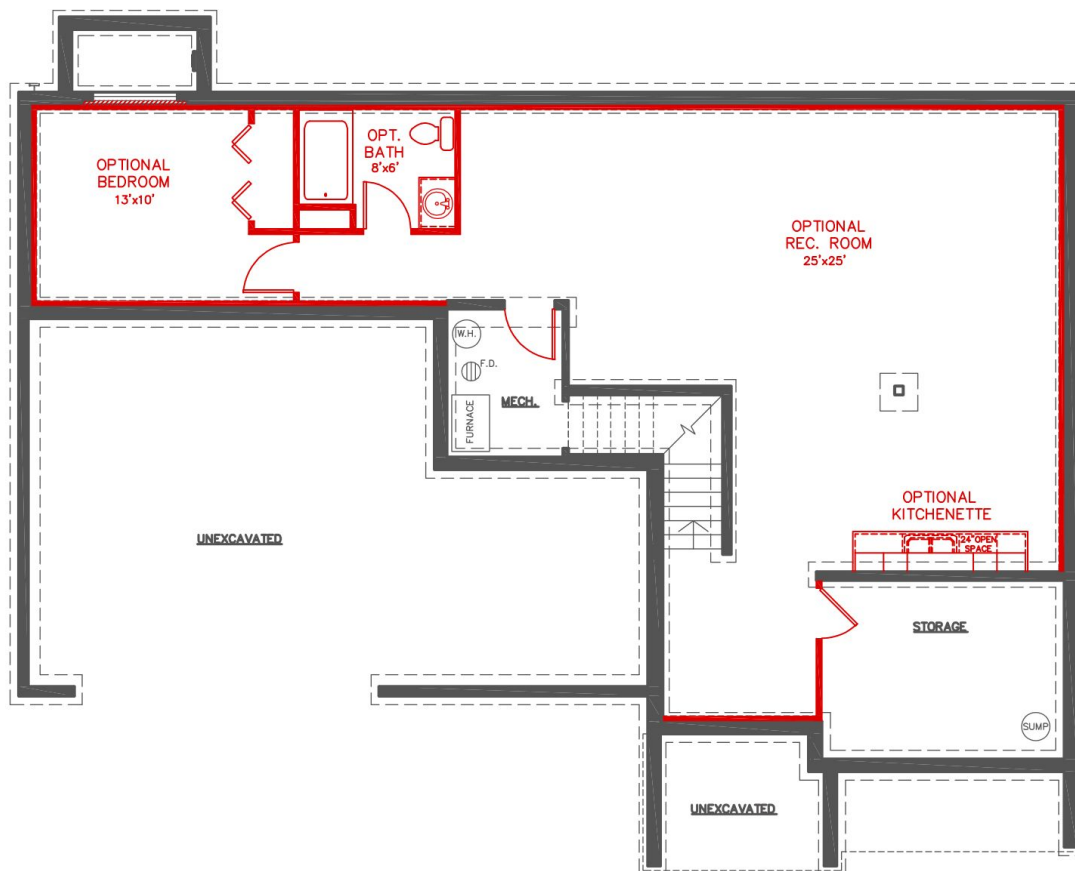
**THE BRECKENRIDGE POPULAR DESIGN OPTIONS**  
Upper Level

# THE BRECKENRIDGE



**THE BRECKENRIDGE POPULAR DESIGN OPTIONS**  
**Main Floor**

# THE BRECKENRIDGE



## THE BRECKENRIDGE POPULAR DESIGN OPTIONS Lower Level