

## THE WALDEN



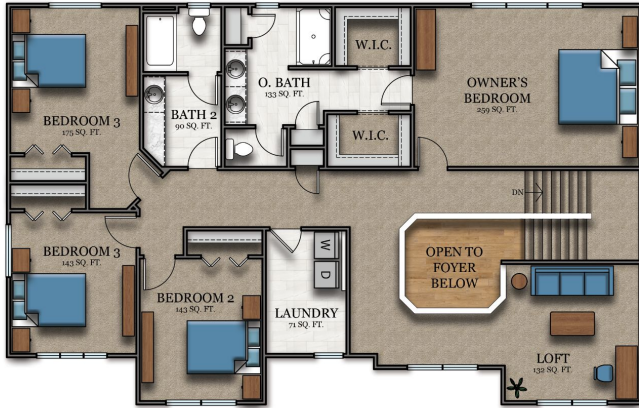
A fine example of style and flexibility, the two level Walden is perfect for families seeking plenty of options, with refined space for living and entertaining. Enter from a covered porch into a home that is both grand and inviting. To your left, a uniquely cozy den, to your right a formal dining room poised to assist with holiday meals and entertaining. Straight ahead, the sun splashed gathering room is bathed in light from its large windows. The kitchen boasts a spacious walk-in pantry, with room to personalize. Upstairs you will find four bedrooms, including a large owner's suite with dual sinks and his and her walk-in closets. Another unique feature, an upstairs den, provides an ideal location for a home office or video game arcade. A convenient 2nd floor laundry adds to the list of the Walden's extensive features- beloved by families who call it home.

**The Walden is for you!**

FOR MORE INFORMATION, VISIT US:

148 South River Ave Suite 100 Holland, MI 49423 | 616-667-3333 | [bosgraaf.com](http://bosgraaf.com)

# THE WALDEN



Upper Level

**Walden**

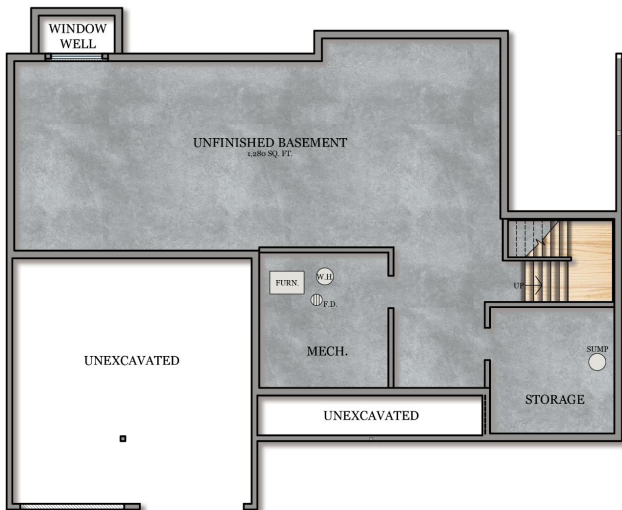
4-6 Bedrooms  
 2.5-3.5 Bathrooms  
 1,568 Sq Ft // Upper Level  
 1,308 Sq Ft // Main Floor  
 866 Sq Ft // Fut. Fin. LL  
 444 Sq Ft // Garage



Main Floor

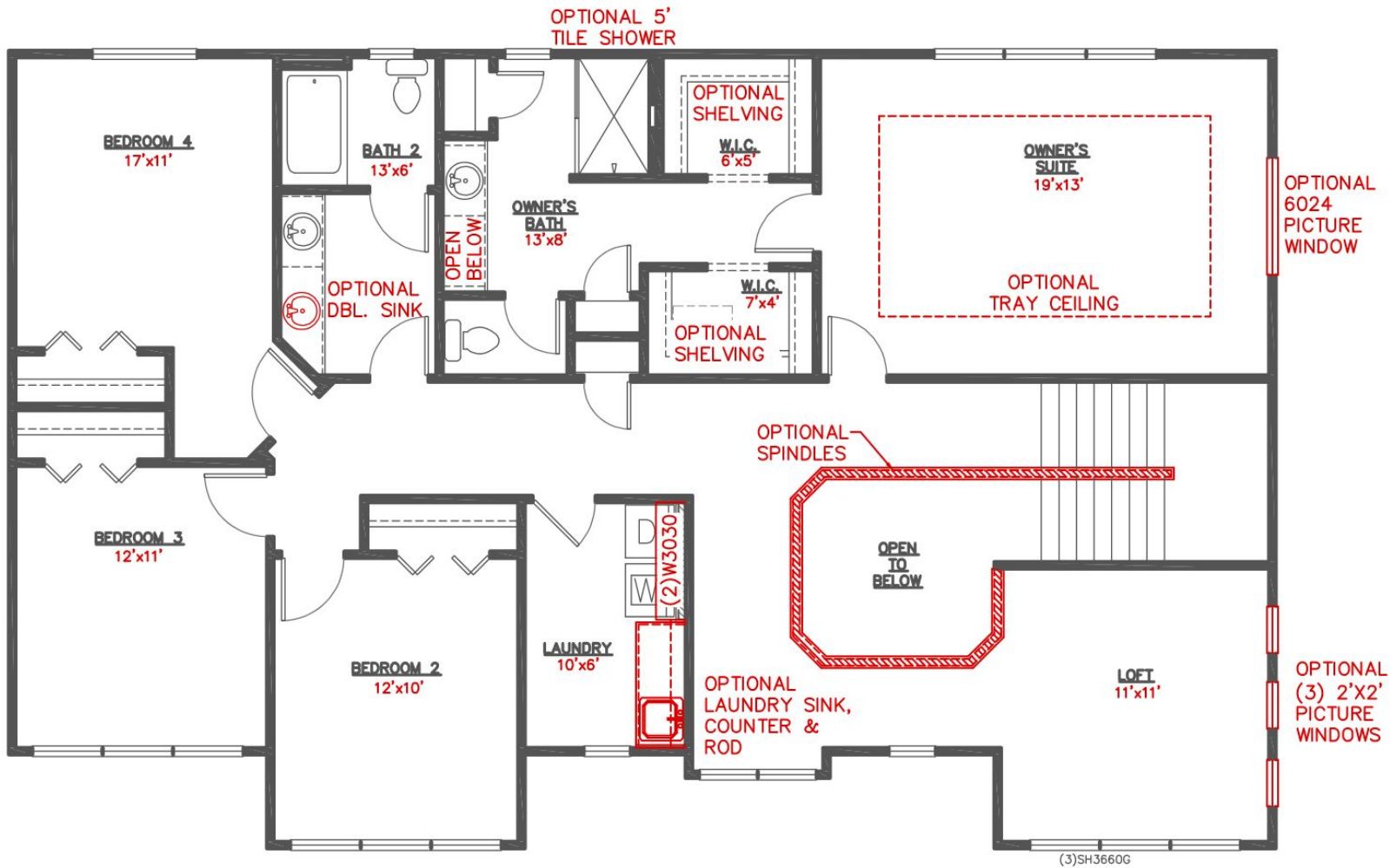
**Flip It, Color It, It's YOUR High Performance Home!**

All of Bosgraaf's home plans can be "flipped" with the garage on either side. Colors, inside and out, are up to you as well. You can even decide to invest in optional features such as a third garage stall, or other enhancements. Even though we offer "pre-designed" home choices, we believe the only place for cookie cutters is in your kitchen drawer!



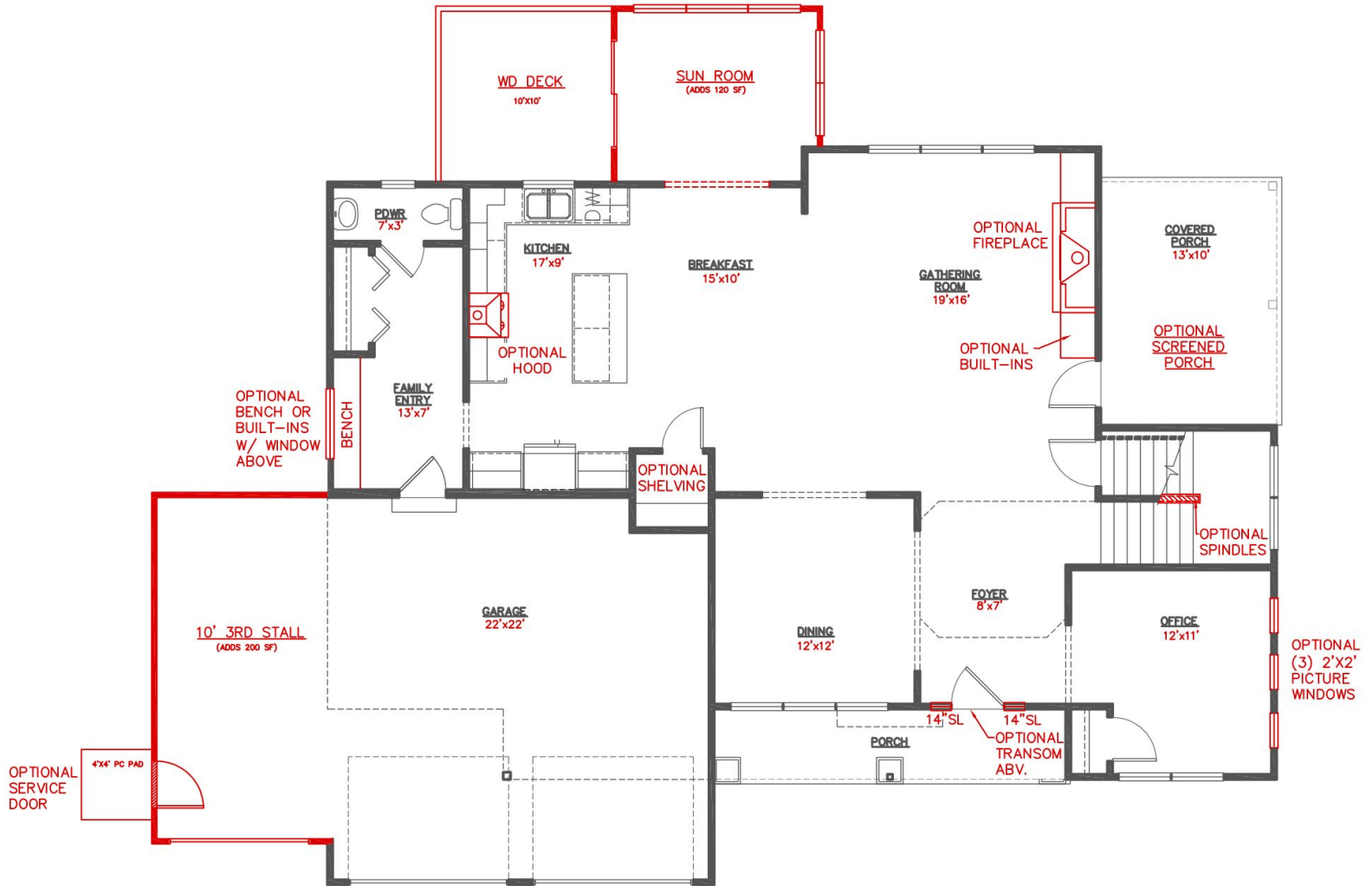
Lower Level

# THE WALDEN



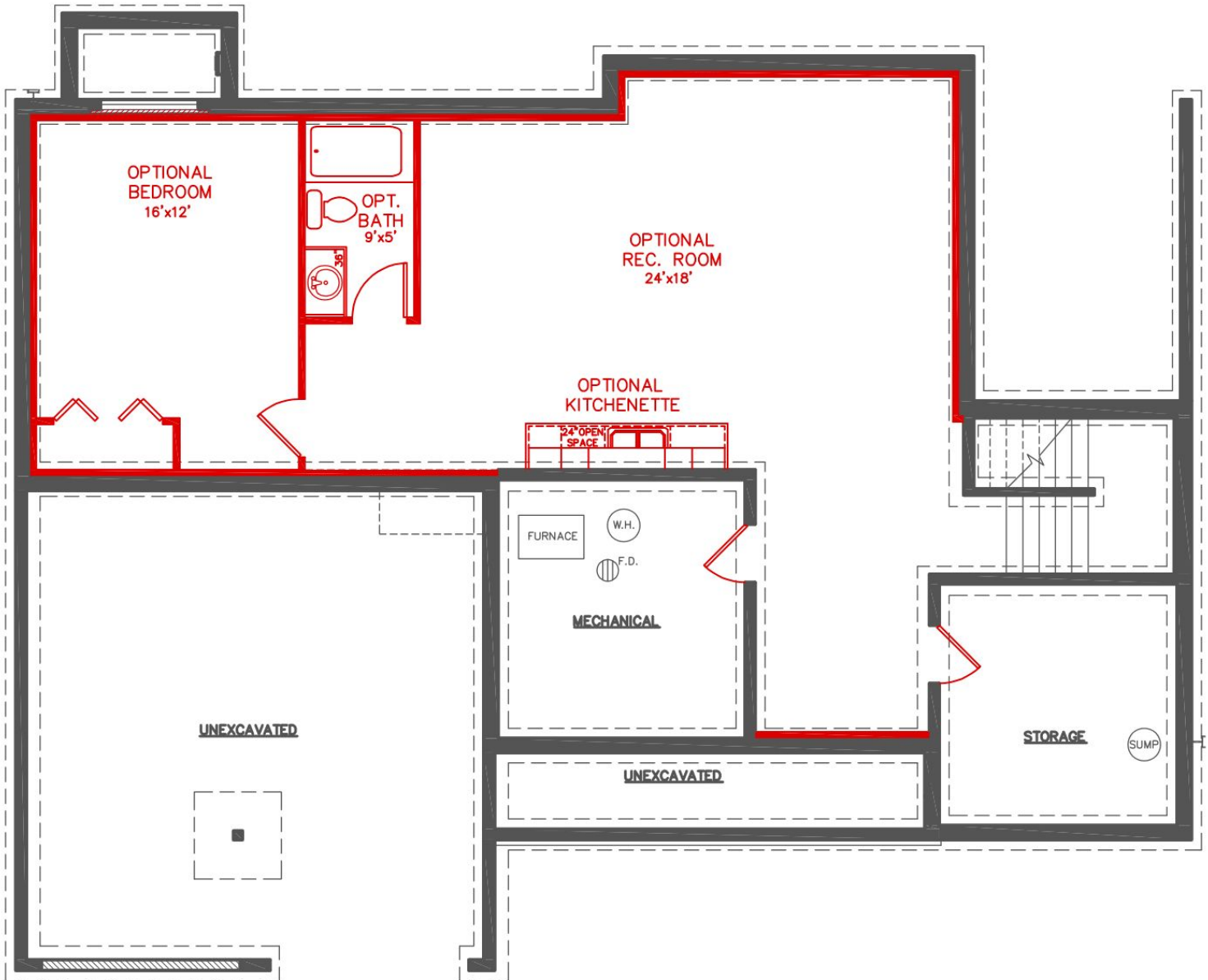
**THE WALDEN POPULAR DESIGN OPTIONS**  
Upper Level

# THE WALDEN



**THE WALDEN POPULAR DESIGN OPTIONS**  
**Main Floor**

# THE WALDEN



**THE WALDEN POPULAR DESIGN OPTIONS**  
**Lower Level**