



THE SILVERTON



The perfect family home that will still perform within your budget. Welcome to the Silverton, with 3 bedrooms and 2.5 baths of finely crafted space, you can be sure that every member of your family will have their own area while still being together. Walk in from the spacious garage into a roomy family entry perfect for housing all your belongings. The kitchen is featured with a large island that flows seamlessly into the gathering area, designed for entertaining. With a future lower level completed, experience 543 sq. ft. of endless fun for the whole family, the Silverton, truly has it all!

The Silverton is for you!

FOR MORE INFORMATION, VISIT US:

148 South River Ave Suite 100 Holland, MI 49423 | 616-667-3333 | bosgraaf.com



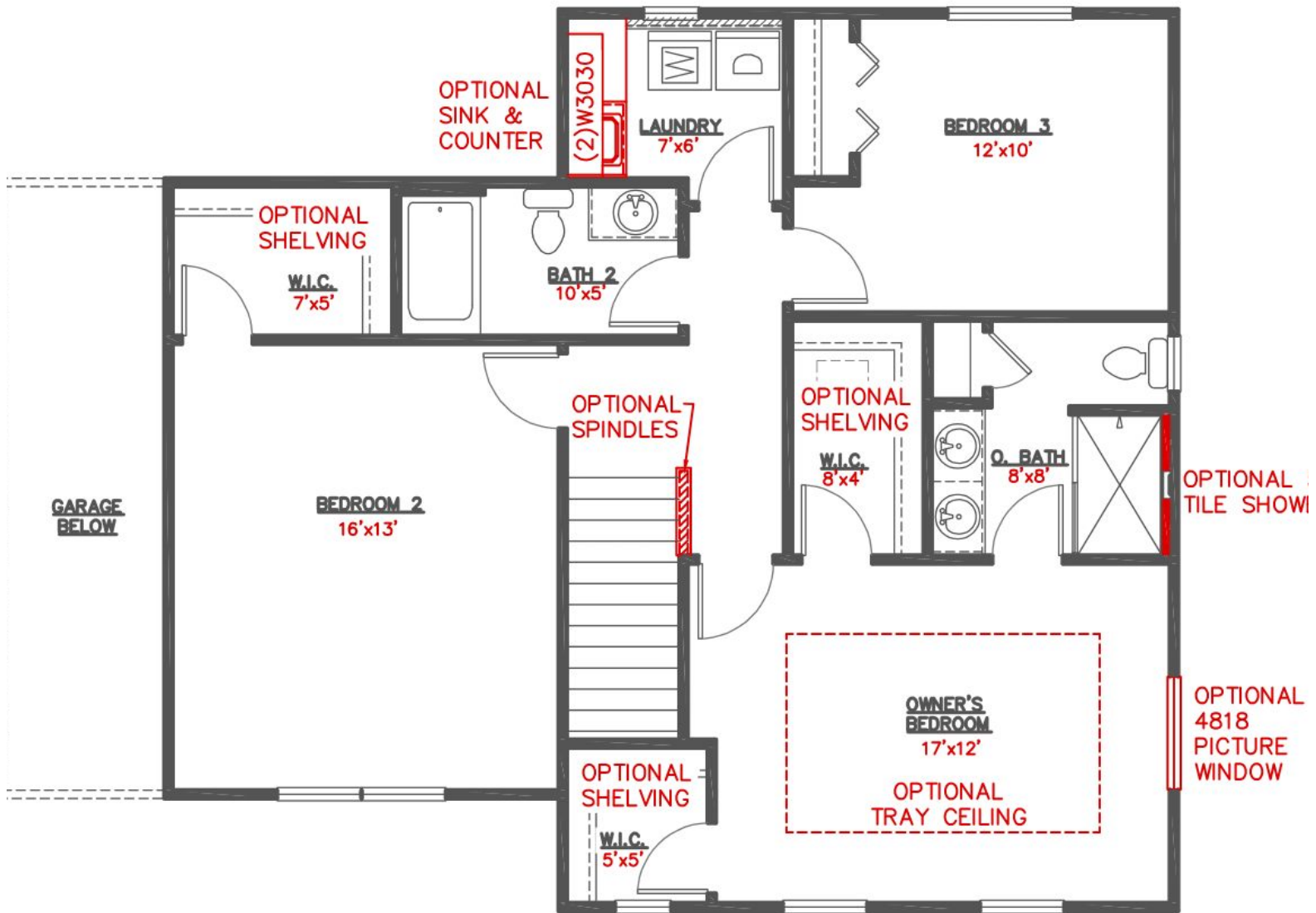
3-4 Bedrooms
2.5-3.5 Bathrooms
1,012 Sq Ft // Upper Level
704 Sq Ft // Main Floor
546 Sq Ft // Fut. Fin. LL
440 Sq Ft // Garage



All of Bosgraaf's home plans can be "flipped" with the garage on either side. Colors, inside and out, are up to you as well. You can even decide to invest in optional features such as a third garage stall, or other enhancements. Even though we offer "pre-designed" home choices, we believe the only place for cookie cutters is in your kitchen drawer!



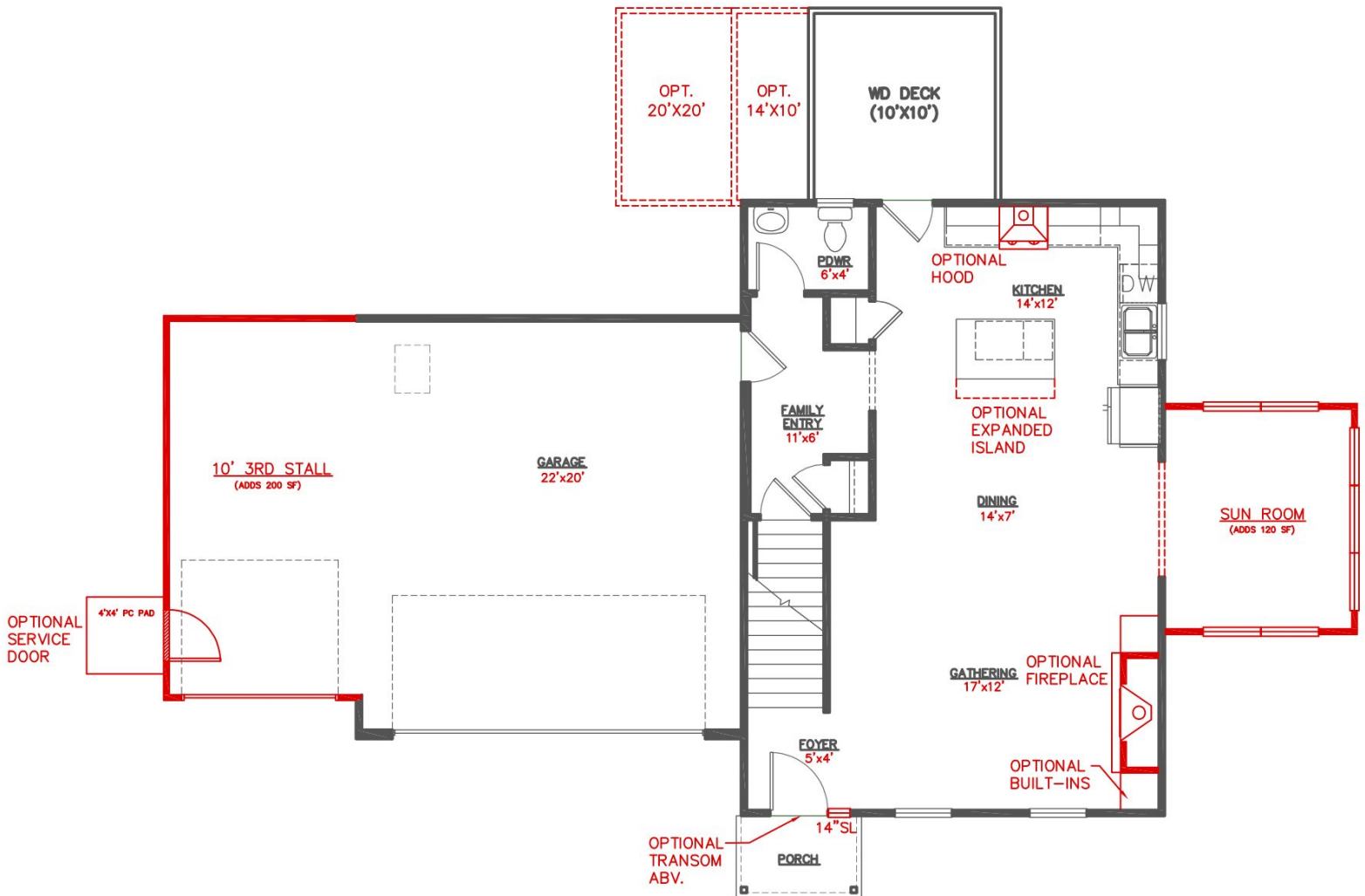
THE SILVERTON



THE SILVERTON POPULAR DESIGN OPTIONS
Upper Level

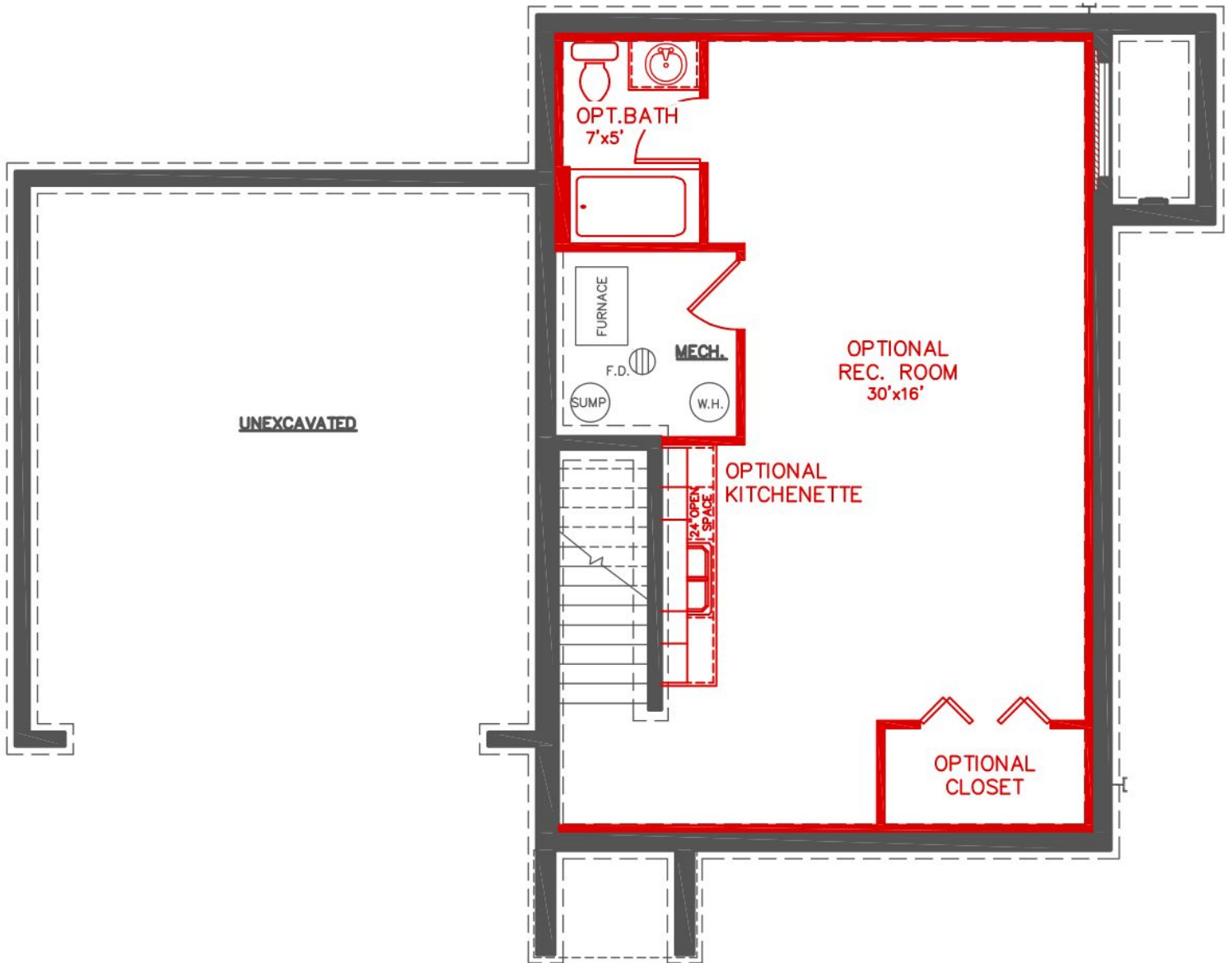


THE SILVERTON



THE SILVERTON POPULAR DESIGN OPTIONS Main Floor

THE SILVERTON



THE SILVERTON POPULAR DESIGN OPTIONS Lower Level