

## THE POPPY



Step into a world of comfort and convenience in this beautifully designed 3-bedroom ranch-style home. The journey begins at the charming, covered porch, providing a warm welcome to all who enter. As you step through the front door, you're greeted by a spacious and inviting foyer that flows into your kitchen and gathering space. This open-concept space is perfect for family gatherings, entertaining friends, or just unwinding after a long day. Each bedroom features its own walk-in closet, offering ample storage for your wardrobe and personal belongings. You'll find two full baths, including the owner's bath on the main level. The lower level offers a wide-open space for a future bedroom and full bath, with a rec room for endless entertainment and fun. Whether you're starting a family or looking for a cozy downsizing option, the Poppy has it all!

**The Poppy is for you!**

FOR MORE INFORMATION, VISIT US:

148 South River Ave Suite 100 Holland, MI 49423 | 616-667-3333 | [bosgraaf.com](http://bosgraaf.com)

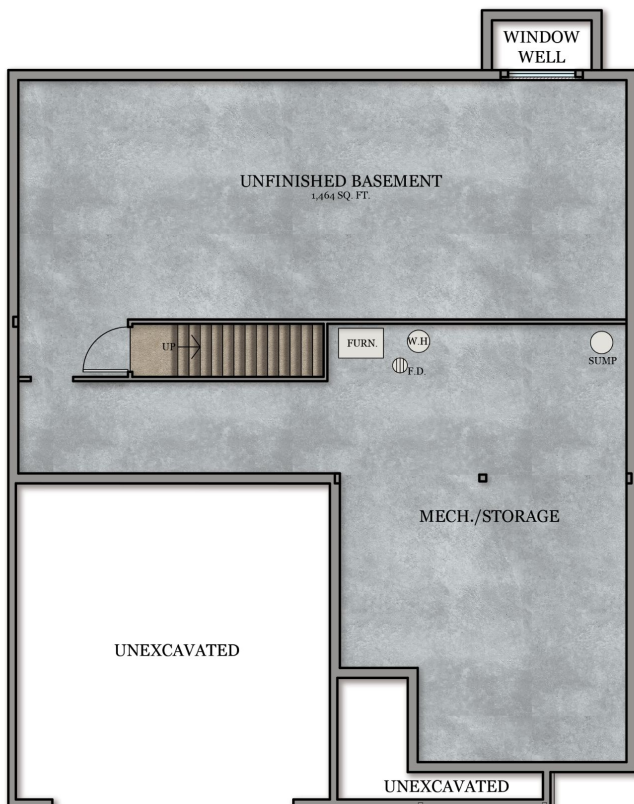
# THE POPPY



Main Floor

## Poppy

3-4 Bedrooms  
2-3 Bathrooms  
1,502 Sq Ft // Main Floor  
682 Sq Ft // Fut. Fin. LL  
484 Sq Ft // Garage

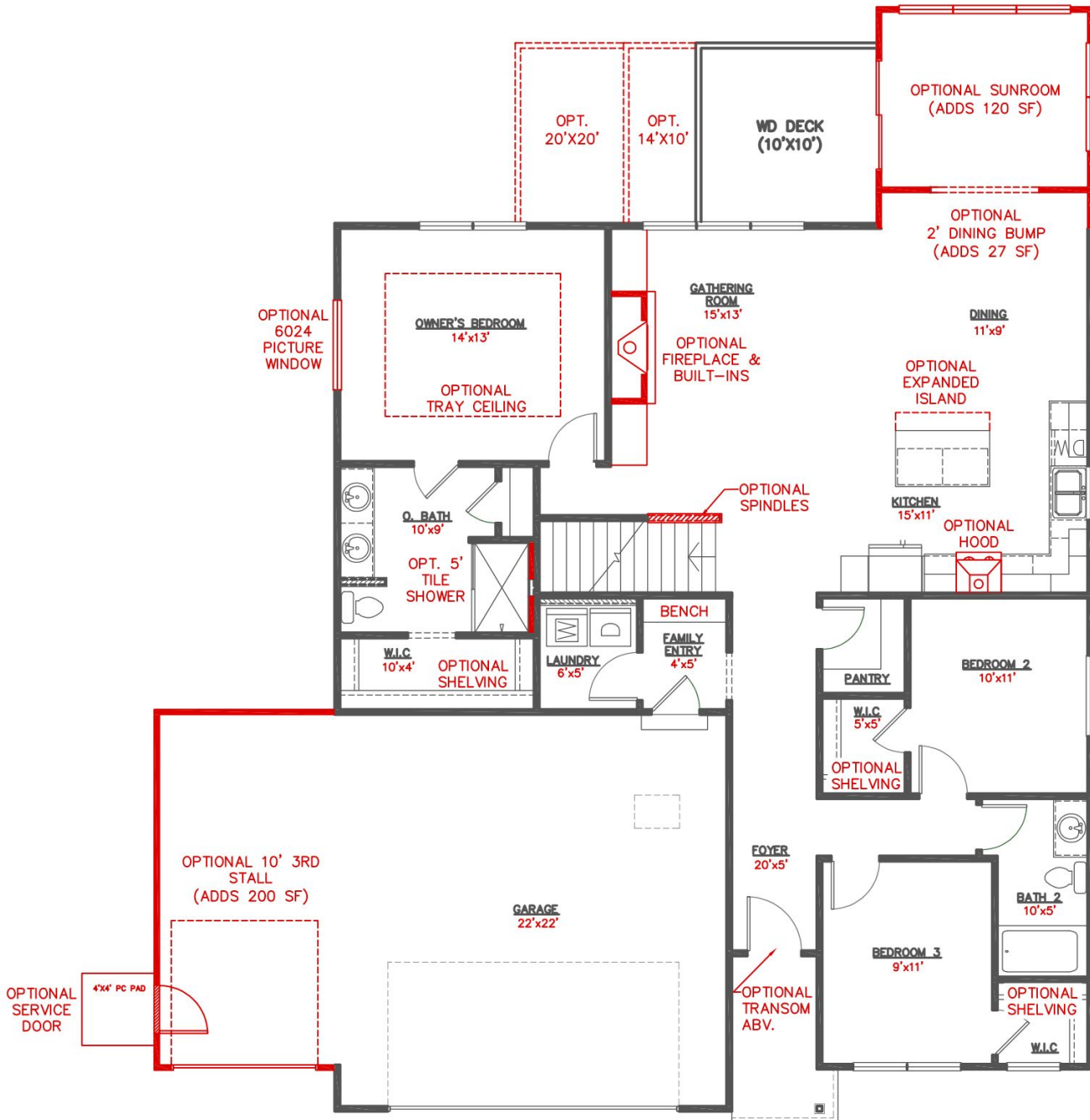


Lower Level

## Flip It, Color It, It's YOUR High Performance Home!

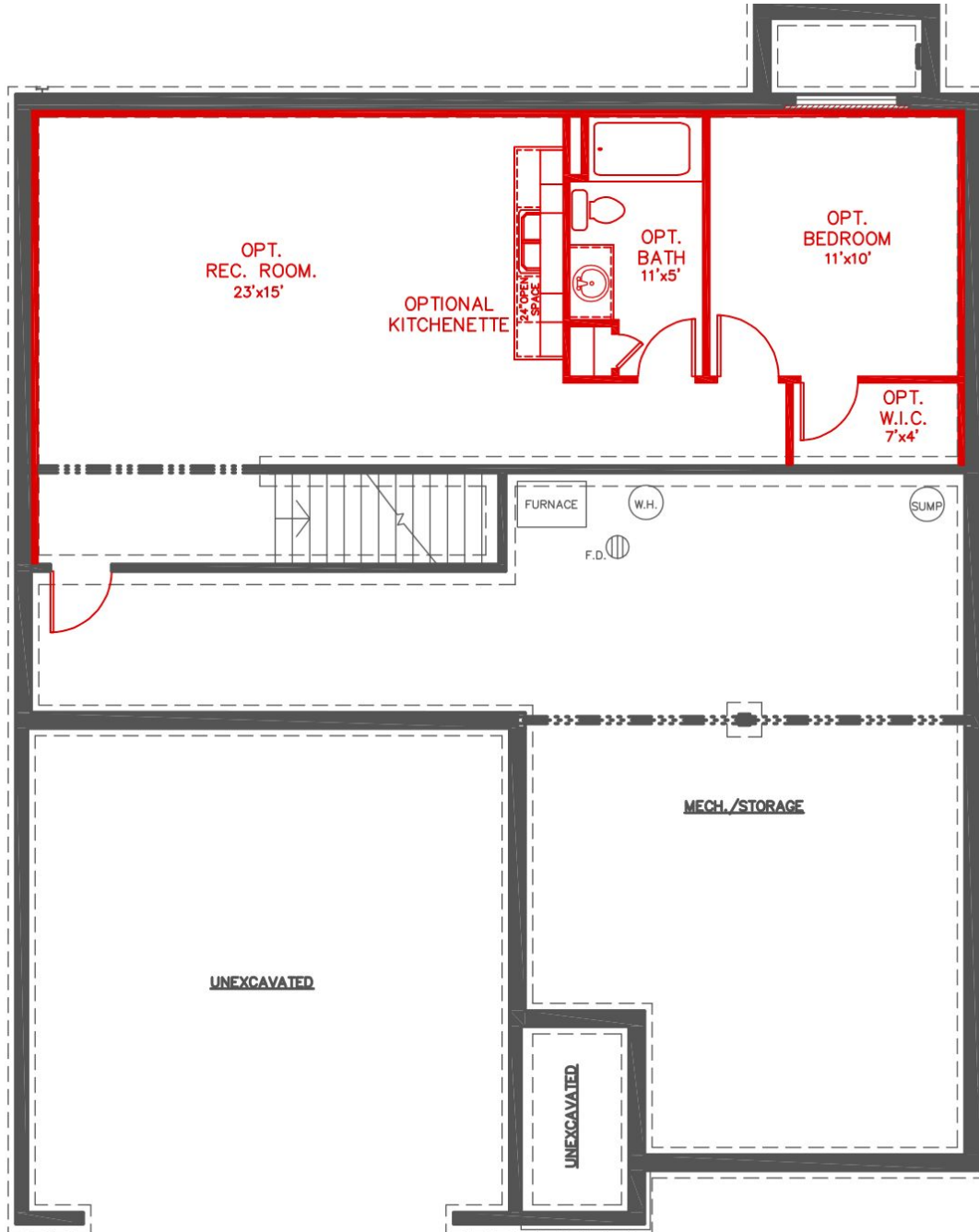
All of Bosgraaf's home plans can be "flipped" with the garage on either side. Colors, inside and out, are up to you as well. You can even decide to invest in optional features such as a third garage stall, or other enhancements. Even though we offer "pre-designed" home choices, we believe the only place for cookie cutters is in your kitchen drawer!

# THE POPPY



**THE POPPY POPULAR DESIGN OPTIONS**  
**Main Floor**

# THE POPPY



**THE POPPY POPULAR DESIGN OPTIONS**  
**Lower Level**