

## THE MCKINLEY



The home that will exceed all expectations, from entertaining, to its stunning architectural design, the McKinley ranks high in all categories. Step inside and be greeted by an enchanting 2-story foyer with high angled walls and gorgeous entry light. Keep walking and find your spacious fully open 2-story Great Room that flows seamlessly into your kitchen, perfect for entertaining all your guests. Upstairs, you'll find the owner's oasis completed with a large owner's bath and a 7x15ft walk-in closet. To complete the upper level is three more spacious bedrooms and another full bath. For even more room, a completed lower level would provide another bedroom and a full-sized recreational area for all your entertaining needs.

**The McKinley is for you!**

FOR MORE INFORMATION, VISIT US:

148 South River Ave Suite 100 Holland, MI 49423 | 616-667-3333 | [bosgraaf.com](http://bosgraaf.com)

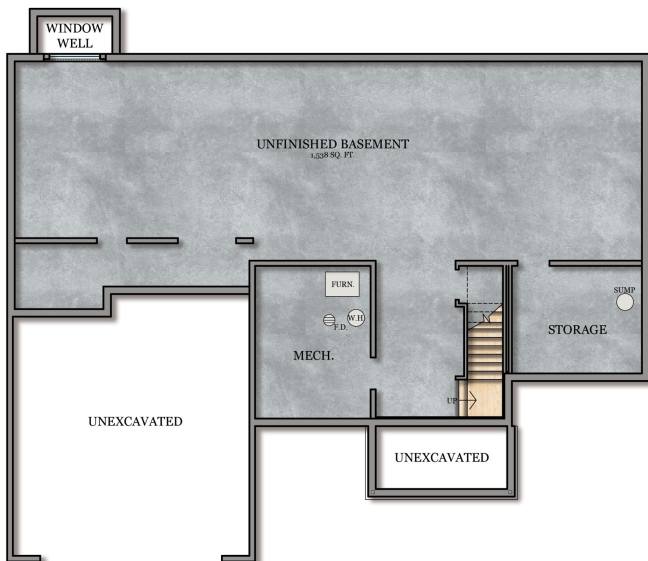
# THE MCKINLEY



Upper Level



Main Floor



Lower Level

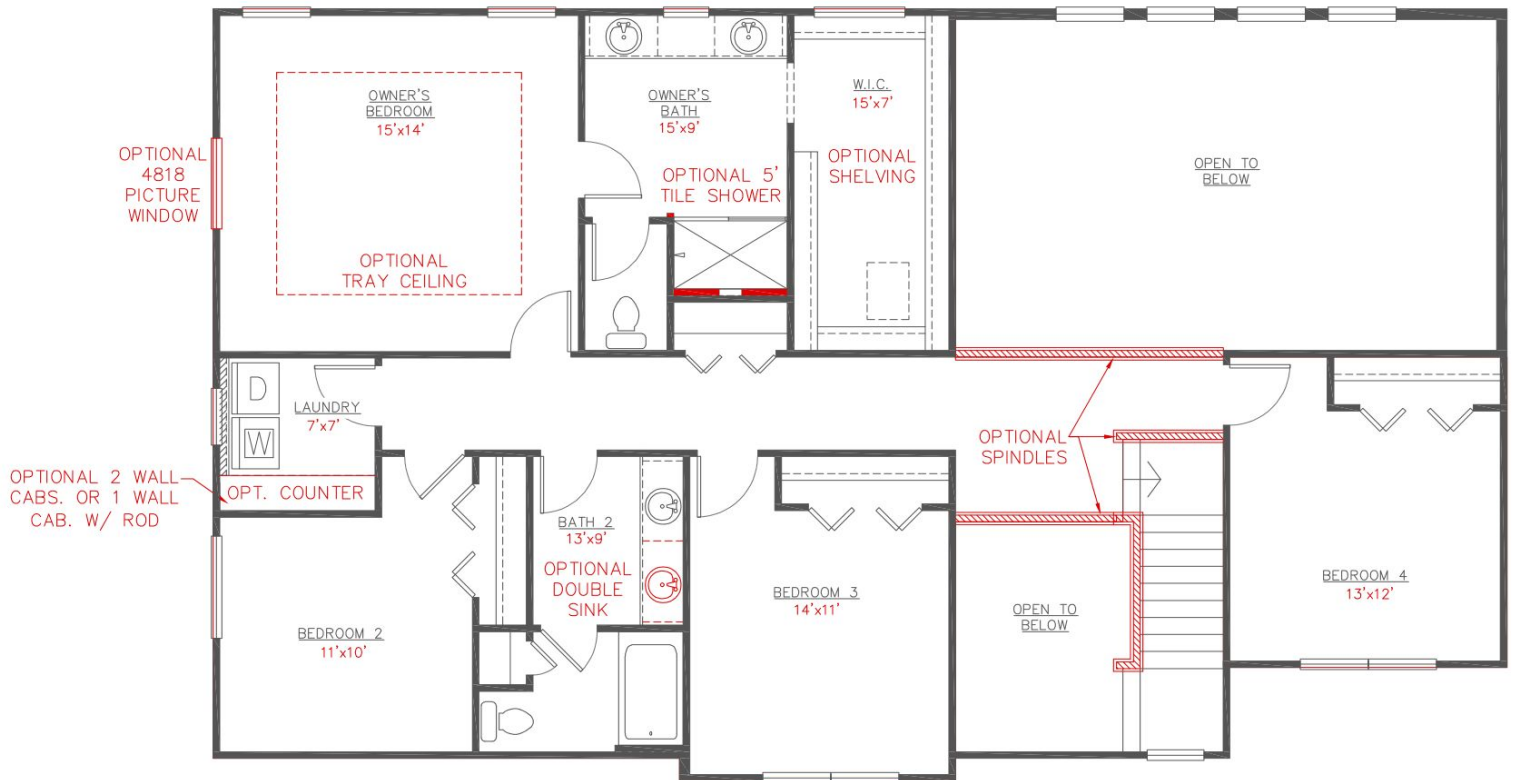
## McKinley

4-5 Bedrooms  
2.5-3.5 Bathrooms  
1,316 Sq Ft // Upper Level  
1,616 Sq Ft // Main Floor  
916 Sq Ft // Fut. Fin. LL  
503 Sq Ft // Garage

**Flip It, Color It,  
It's YOUR  
High Performance  
Home!**

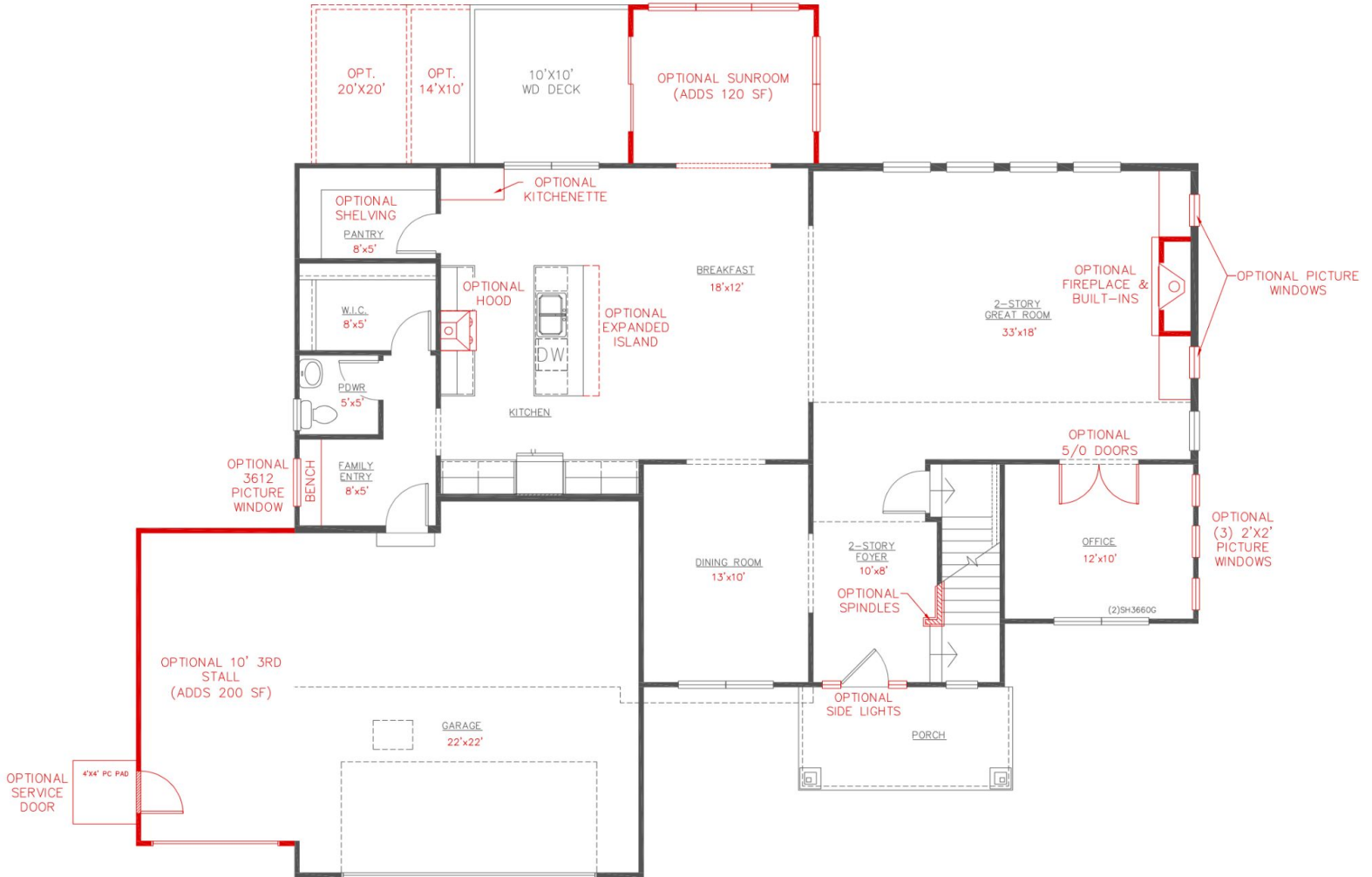
All of Bosgraaf's home plans can be "flipped" with the garage on either side. Colors, inside and out, are up to you as well. You can even decide to invest in optional features such as a third garage stall, or other enhancements. Even though we offer "pre-designed" home choices, we believe the only place for cookie cutters is in your kitchen drawer!

# THE MCKINLEY



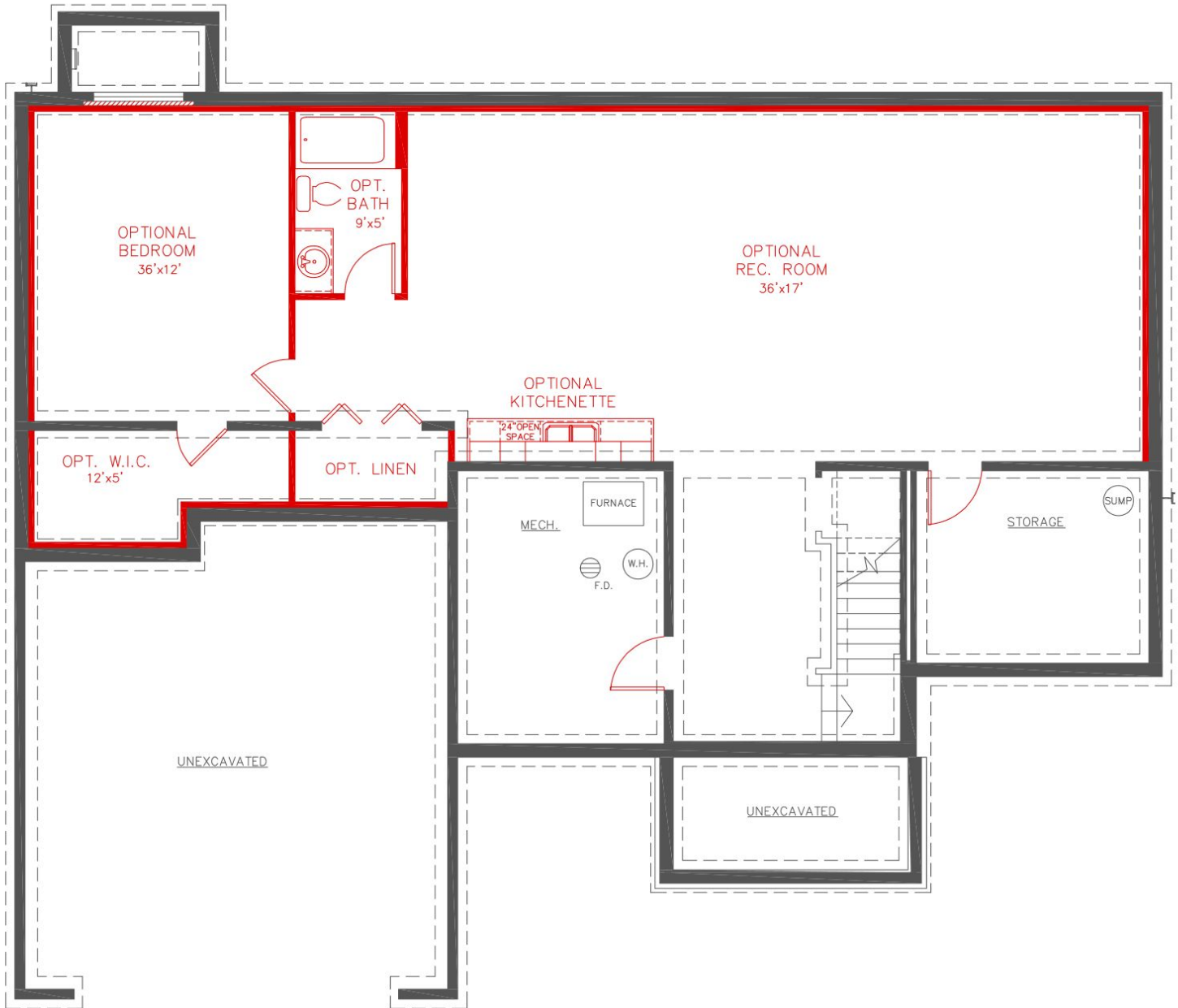
## THE MCKINLEY POPULAR DESIGN OPTIONS Upper Level

# THE MCKINLEY



**THE MCKINLEY POPULAR DESIGN OPTIONS**  
**Main Floor**

# THE MCKINLEY



**THE MCKINLEY POPULAR DESIGN OPTIONS**  
**Lower Level**